



# GMT MONTHLY MEMBERSHIP PROGRESS REPORT

Results as of: 6/30/2020

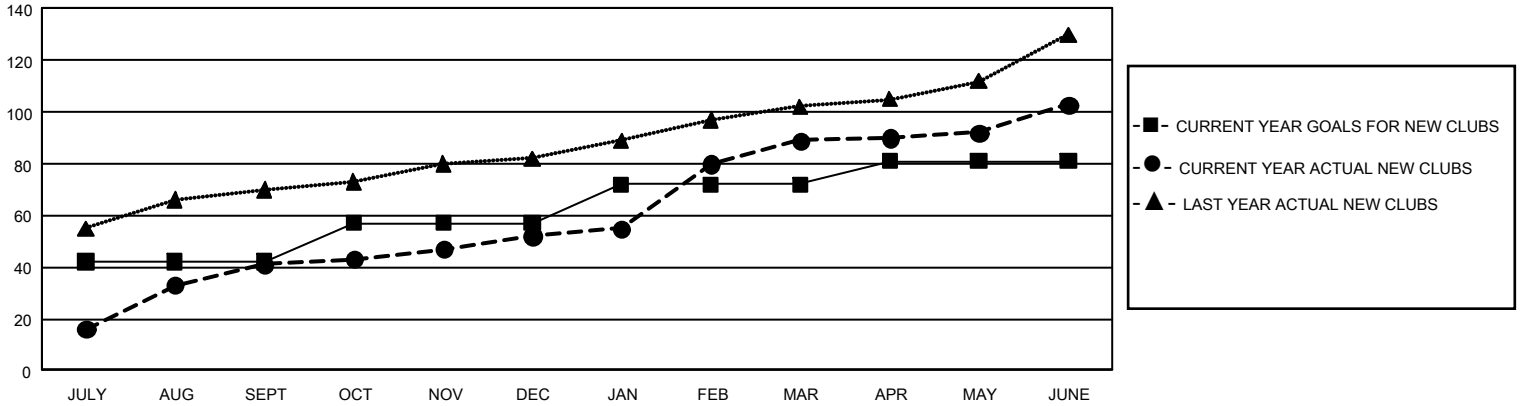
## GMT Constitutional Area 6, Group P

GMT: OPEN

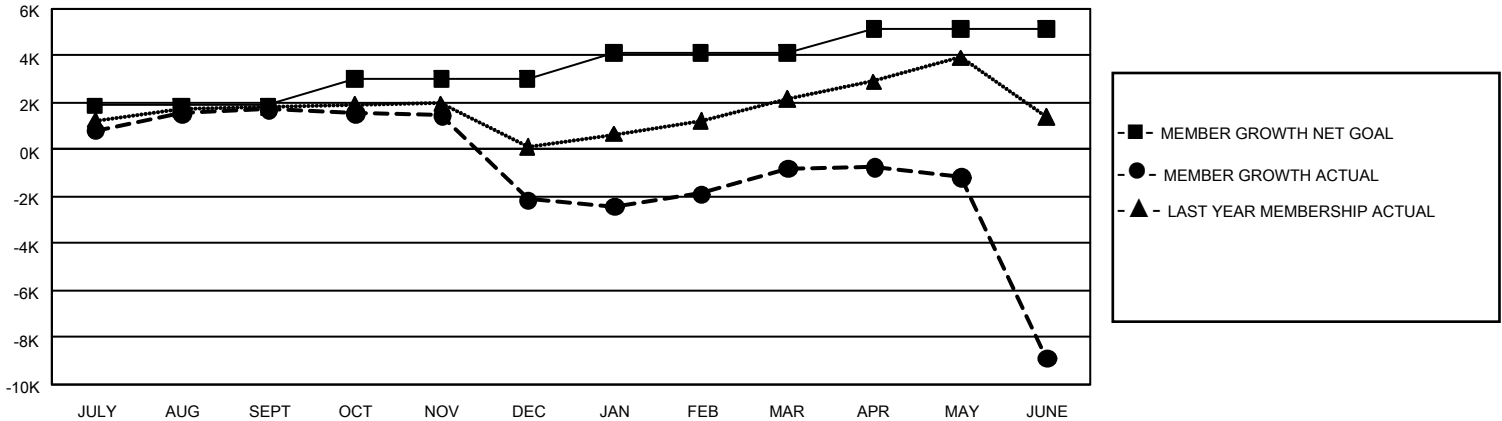
REPORT DOES NOT INCLUDE CLUBS IN UNDISTRICTED AREAS.

Clubs				Members			
RESULTS FOR 2019-2020				RESULTS FOR 2019-2020			
QUARTER	NEW CLUB GOAL	NEW CLUBS	DROPPED CLUBS	QUARTER	MEMBER GROWTH NET GOAL	MEMBER GROWTH ACTUAL	DROPPED MEMBERS ACTUAL (including transfers)
JULY/AUG/SEPT	126	41	7	JULY/AUG/SEPT	5,670	3,482	1,497
OCT/NOV/DEC	45	11	66	OCT/NOV/DEC	3,345	1,284	4,918
JAN/FEB/MAR	45	37	9	JAN/FEB/MAR	3,345	4,043	2,013
APR/MAY/JUNE	27	14	1	APR/MAY/JUNE	3,120	2,289	10,018

GOALS AND ACTUAL NEW CLUBS CUMULATIVE



GOALS AND ACTUAL MEMBERS CUMULATIVE



DROPPED CLUBS: 83	1,138 CLUBS OF 1,636 ADDED 1 OR MORE NEW MEMBERS	<u>GENDER DISTRIBUTION</u>	
<u>DROPPED MEMBERS</u>		MALE	47,277 (79.33%)
DECEASED	228	FEMALE	12,320 (20.67%)
CLUB CANCELLED	2,105	TOTAL FAMILY UNIT MEMBERS 23,600	
OTHER	16,111	FAMILY MEMBERS PAYING HALF DUES 14,381	
<b>TOTAL</b>	<b>18,444</b>		

[CLICK HERE FOR CUMULATIVE MEMBERSHIP DATA](#)